



Panola *College*

BUDGET
FISCAL YEAR
2006-2007

amended August 20, 2007

PANOLA COLLEGE

TABLE OF CONTENTS 2006-2007 BUDGET

BUDGET & BUDGET COMPARISON (ALL FUNDS)	1
CURRENT UNRESTRICTED FUNDS REVENUES AND EXPENDITURES	
Budget & Budget Comparison	2
Graph - Revenue by Major Function	3
Graph - Expenditures by Major Function	4
Graph - Expenditures by Major Object	5
Expenditure Functional Budget	6-8
Expenditure Object Budget	9-12
AUXILIARY FUND	
Budget & Budget Comparison	13
Expenditure Object Budget	14
CURRENT RESTRICTED FUND BUDGET	15-16
UNEXPENDED PLANT FUND BUDGET	17
CONSTRUCTION FUND BUDGET	18

PANOLA COLLEGE
 BUDGET AND BUDGET COMPARISON
 ALL FUNDS COMBINED
 2006-07 AND 2005-06

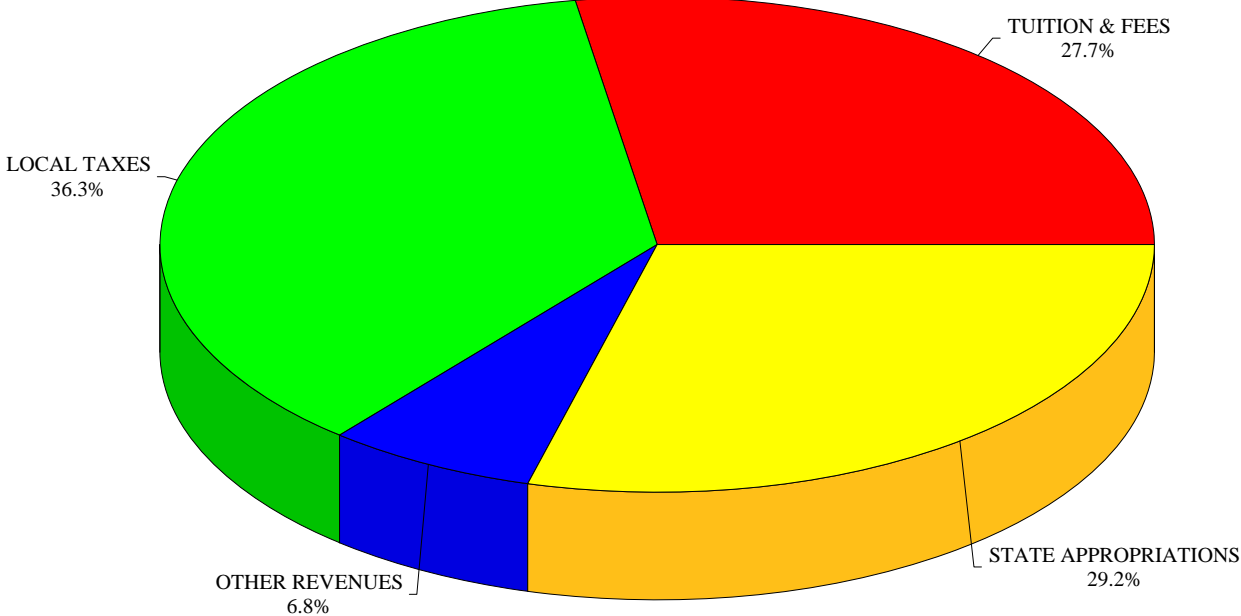
	<u>2006-07</u>	<u>2005-06</u>
	<u>BUDGET</u>	<u>BUDGET</u>
REVENUES AND OTHER SOURCES		
TUITION AND FEES	\$3,122,795	\$2,915,000
LOCAL TAXES	4,100,050	3,382,370
STATE APPROPRIATIONS	3,294,704	3,294,704
STATE GRANTS	221,445	187,126
FEDERAL GRANTS	2,200,008	2,257,598
INTEREST/OTHER INCOME	1,049,345	734,596
AUXILIARY INCOME	1,533,000	1,497,000
BOND PROCEEDS		
USE OF CASH RESERVES	114,025	374,516
 TOTAL REVENUES	 <u>\$15,635,372</u>	 <u>\$14,642,910</u>
 EXPENDITURES		
UNRESTRICTED FUND EXPENDITURES	\$10,046,870	\$9,542,666
AUXILIARY FUND EXPENDITURES	1,790,696	1,763,973
RESTRICTED FUND EXPENDITURES	2,759,461	2,748,901
CONSTRUCTION FUND EXPENDITURES	675,000	400,000
 TOTAL EXPENDITURES	 <u>\$15,272,027</u>	 <u>\$14,455,540</u>
 OTHER SOURCES AND USES		
TRANSFERS IN:		
UNRESTRICTED FUND	\$909,049	\$716,520
UNEXPENDED PLANT FUND	537,370	593,886
UNEXPENDED PLANT FUND - LIBRARY	363,345	187,370
TRANSFERS OUT:		
UNRESTRICTED FUND	(909,049)	(716,520)
UNEXPENDED PLANT FUND	(537,370)	(593,886)
 TOTAL OTHER SOURCES AND (USES)	 <u>\$363,345</u>	 <u>\$187,370</u>

PANOLA COLLEGE
 CURRENT UNRESTRICTED FUND REVENUE & EXPENDITURES
 2006-07 BUDGET & 2005-06 BUDGET COMPARISON

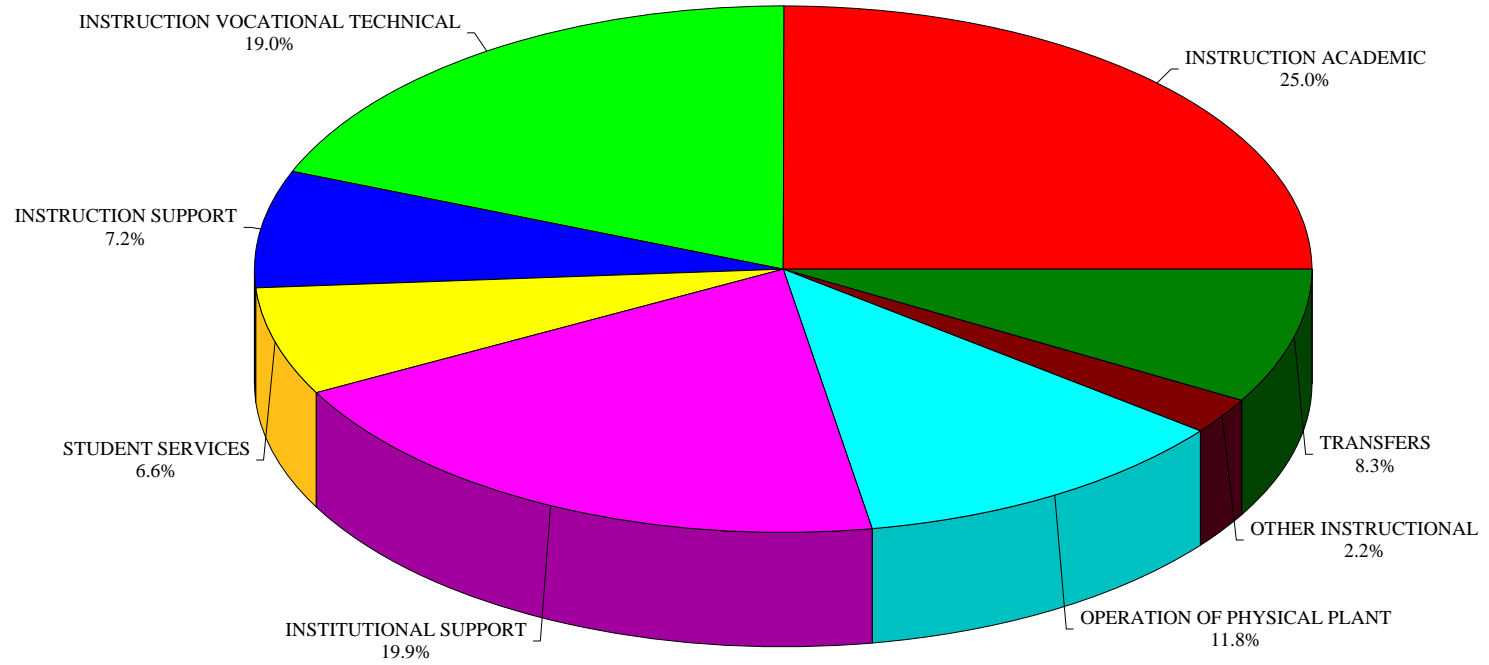
REVENUE SOURCE	CARTHAGE CAMPUS	MARSHALL CENTER	SHELBY CENTER	2006-07 BUDGET	2005-06 BUDGET
TUITION & FEES	\$2,705,590	\$70,575	\$346,630	\$3,122,795	\$2,915,000
LOCAL TAXES	4,100,050			4,100,050	3,382,370
STATE APPROPRIATIONS (ALLOCATED)	2,854,533	74,460	365,711	3,294,704	3,294,704
INTEREST INCOME	220,000			220,000	116,000
TRANSFERS FROM UNEXPENDED RESERVES	(137,630)			(137,630)	193,886
OTHER REVENUES	271,100	33,400	51,500	356,000	357,226
TOTAL REVENUE	\$10,013,643	\$178,435	\$763,841	\$10,955,919	\$10,259,186
EXPENDITURES					
INSTRUCTION ACADEMIC	\$2,337,008	\$113,895	\$287,374	\$2,738,277	\$2,483,493
INSTRUCTION VOCATIONAL TECHNICAL	1,681,098		395,435	2,076,533	2,113,044
INSTRUCTIONAL SUPPORT	789,537			789,537	762,936
STUDENT SERVICES	726,311			726,311	694,551
INSTITUTIONAL SUPPORT	2,184,134			2,184,134	2,157,103
OPERATION OF PHYSICAL PLANT	1,243,396	3,100	42,819	1,289,315	1,168,660
WORKFORCE EDUCATION / OTHER	204,195	7,180	31,388	242,763	162,879
TRANSFERS TO UNEXPENDED RESERVES	363,345			363,345	187,370
TRANSFERS TO OTHER FUNDS	545,704			545,704	529,150
TOTAL EXPENDITURES	\$10,074,728	\$124,175	\$757,016	\$10,955,919	\$10,259,186

Current Unrestricted Funds

Revenues By Major Function

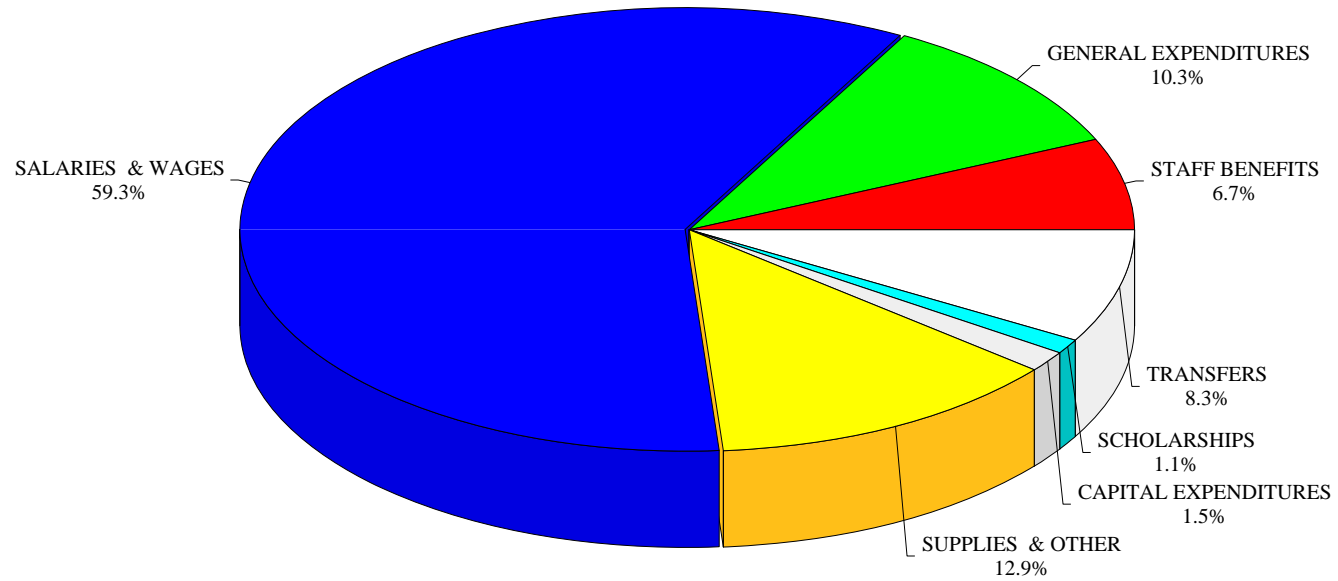


Expenditures By Function



Current Unrestricted Fund

Expenditures By Major Object



PANOLA COLLEGE
 CURRENT UNRESTRICTED FUND EXPENDITURES
 EXPENDITURE FUNCTIONAL BUDGET
 2006-07

EXPENDITURES	CARTHAGE CAMPUS	MARSHALL CENTER	SHELBY CENTER	TOTAL 2006-07
ACADEMIC INSTRUCTION:				
INSTRUCTIONAL ADMINISTRATION	\$167,437	\$33,875	\$144,237	\$345,549
BIOLOGY	321,362			321,362
PHYSICS/CHEMISTRY	78,126			78,126
PHYSICAL EDUCATION	199,526			199,526
VOCAL MUSIC	94,626			94,626
INSTRUMENTAL MUSIC	136,470			136,470
SPEECH	95,575			95,575
DRAMA	90,530			90,530
ART	73,097			73,097
SPANISH	50,607			50,607
ENGLISH	248,417			248,417
EDUCATION	40,513			40,513
JOURNALISM	44,352			44,352
MATHEMATICS	242,353			242,353
POLITICAL SCIENCE	121,911			121,911
HISTORY	63,623			63,623
BUSINESS	71,179			71,179
PSYCHOLOGY	63,938			63,938
DEVELOPMENTAL SKILLS ACADEMIC RELATED	133,366			133,366
		80,020	143,137	223,157
TOTAL ACADEMIC INSTRUCTION	2,337,008	113,895	287,374	2,738,277
OTHER INSTRUCTION				
WORKFORCE EDUCATION	140,847	7,180	13,957	161,984
EMT PROGRAM	63,348			63,348
OIL & GAS TECHNOLOGY			17,431	17,431
TOTAL OTHER INSTRUCTION	204,195	7,180	31,388	242,763

PANOLA COLLEGE
 CURRENT UNRESTRICTED FUND EXPENDITURES
 EXPENDITURE FUNCTIONAL BUDGET
 2006-07

EXPENDITURES	CARTHAGE CAMPUS	MARSHALL CENTER	SHELBY CENTER	TOTAL 2006-07
VOCATIONAL TECHNICAL INSTRUCTION:				
AGRICULTURE	7,779			7,779
OFFICE SYSTEMS TECHNOLOGY	121,592			121,592
COMPUTER INFORMATION SYSTEMS	209,110			209,110
WELDING	85,488			85,488
COSMETOLOGY	109,633		76,176	185,809
OCCUPATIONAL THERAPY ASSISTING	182,270			182,270
HEALTH INFORMATION TECHNOLOGY	118,364			118,364
ASSOC. DEGREE NURSING	658,017			658,017
VOCATIONAL NURSING	188,845		225,144	413,989
ENVIRONMENTAL TECHNOLOGY			5,250	5,250
INDUSTRIAL TECHNOLOGY			88,865	88,865
TOTAL VOCATIONAL TECHNICAL INSTRUCTION	1,681,098	0	395,435	2,076,533
INSTRUCTIONAL SUPPORT:				
LIBRARY	392,062			392,062
DISTANCE LEARNING	209,653			209,653
COMPUTER SERVICES	187,822			187,822
TOTAL INSTRUCTIONAL SUPPORT	789,537	0	0	789,537
INSTITUTIONAL SUPPORT:				
GOVERNING BOARD OF TRUSTEES	48,148			48,148
PRESIDENT'S OFFICE	219,452			219,452
BUSINESS & FISCAL MANAGEMENT	380,146			380,146
COLLEGE RELATIONS/SERVICES	190,456			190,456
GRANTS	51,970			51,970
GENERAL INSTITUTIONAL	1,137,710			1,137,710
CAMPUS SECURITY	97,887			97,887
STAFF BENEFITS	43,352			43,352
INSTITUTIONAL RESEARCH	8,713			8,713
INSTITUTIONAL EFFECTIVENESS / SACS	6,300			6,300
TOTAL INSTITUTIONAL SUPPORT	2,184,134	0	0	2,184,134

PANOLA COLLEGE
 CURRENT UNRESTRICTED FUND EXPENDITURES
 EXPENDITURE FUNCTIONAL BUDGET
 2006-07

EXPENDITURES	CARTHAGE CAMPUS	MARSHALL CENTER	SHELBY CENTER	TOTAL 2006-07
STUDENT SERVICES:				
STUDENT SERVICES ADMINISTRATION	199,970			199,970
ADMISSIONS & REGISTRAR	175,428			175,428
STUDENT ACTIVITIES	59,754			59,754
STUDENT SENATE	4,100			4,100
FINANCIAL AID	111,536			111,536
GUIDANCE & COUNSELING	85,636			85,636
TESTING	87,595			87,595
HONORS PROGRAM	2,292			2,292
TOTAL STUDENT SERVICES	726,311			726,311
PHYSICAL PLANT:				
GENERAL SERVICES	943,846	0	0	943,846
UTILITIES	299,550	3,100	42,819	345,469
TOTAL PHYSICAL PLANT	1,243,396	3,100	42,819	1,289,315
TOTAL EXPENDITURES BEFORE TRANSFERS AND OTHER USES	9,165,679	124,175	757,016	10,046,870
TRANSFERS				
TRANSFER TO AUXILIARY	239,696			239,696
TRANSFER TO UNEXPENDED PLANT	363,345			363,345
TRANSFER TO GENERAL SCHOLARSHIPS	306,008			306,008
TOTAL TRANSFERS	909,049	0	0	909,049
TOTAL EXPENDITURES AND TRANSFERS	\$10,074,728	\$124,175	\$757,016	\$10,955,919

PANOLA COLLEGE
 CURRENT UNRESTRICTED FUND EXPENDITURES
 EXPENDITURES OBJECT BUDGET
 2006-07

FUNCTION	SALARIES	STAFF BENEFITS	GENERAL EXPENSES	SUPPLIES	EQUIPMENT	SCHOLAR- SHIPS	TRAVEL	TOTAL WITHOUT SALARIES	TOTAL BUDGET 2006-07
CARTHAGE CAMPUS									
ACADEMIC INSTRUCTION:									
ACADEMIC ADMINISTRATION	\$126,284	\$13,528	\$22,825	\$1,800	\$		\$3,000	\$41,153	\$167,437
BIOLOGY	263,994	28,768	5,635	14,875	3,800		4,290	57,368	321,362
PHYSICS/CHEMISTRY	57,729	6,332	1,820	9,545			2,700	20,397	78,126
PHYSICAL EDUCATION	162,287	14,939	850	12,300	8,550		600	37,239	199,526
VOCAL MUSIC	52,492	4,599	1,435	7,925	1,200	23,170	3,805	42,134	94,626
INSTRUMENTAL MUSIC	83,196	8,739	635	8,800	4,500	25,000	5,600	53,274	136,470
SPEECH	67,004	5,996	975	1,025		12,175	8,400	28,571	95,575
DRAMA	56,900	5,192	2,100	10,000		10,000	6,338	33,630	90,530
ART	62,001	6,697	860	2,699		440	400	11,096	73,097
SPANISH	44,517	5,015	425	300			350	6,090	50,607
ENGLISH	215,121	25,376	2,970	3,350	800		800	33,296	248,417
EDUCATION	36,059	2,889	1,015	350			200	4,454	40,513
JOURNALISM	29,347	2,745	610	6,050		3,700	1,900	15,005	44,352
MATHEMATICS	214,391	21,762	2,450	2,350			1,400	27,962	242,353
POLITICAL SCIENCE	109,899	9,591	671	350			1,400	12,012	121,911
HISTORY	53,980	4,718	1,635	1,250			2,040	9,643	63,623
BUSINESS	62,626	6,878	745	50			880	8,553	71,179
PSYCHOLOGY	57,201	4,977	1,160	300			300	6,737	63,938
DEVELOPMENTAL SKILLS	118,597	11,779	1,190	1,200			600	14,769	133,366
TOTAL ACADEMIC INSTRUCTION	1,873,625	190,520	50,006	84,519	18,850	74,485	45,003	463,383	2,337,008

PANOLA COLLEGE
 CURRENT UNRESTRICTED FUND EXPENDITURES
 EXPENDITURES OBJECT BUDGET
 2006-07

FUNCTION	SALARIES	STAFF BENEFITS	GENERAL EXPENSES	SUPPLIES	EQUIPMENT	SCHOLAR- SHIPS	TRAVEL	TOTAL WITHOUT SALARIES	TOTAL BUDGET 2006-07
CARTHAGE CAMPUS									
VOCATIONAL INSTRUCTION:									
AGRICULTURE	6,462	517	50	450			300	1,317	7,779
OFFICE SYSTEMS TECHNOLOGY	104,243	12,109	640	3,600			1,000	17,349	121,592
COMPUTER INFORMATION SYSTEMS	181,052	20,508	1,150	5,000			1,400	28,058	209,110
WELDING	63,549	7,189	1,350	13,000			400	21,939	85,488
COSMETOLOGY	84,900	9,433	2,225	10,775	800		1,500	24,733	109,633
OCCUPATIONAL THERAPY ASSISTING	153,703	16,277	4,990	4,750			2,550	28,567	182,270
HEALTH INFORMATION TECHNOLOGY	97,189	8,905	3,310	6,210			2,750	21,175	118,364
ASSOC. DEGREE NURSING	572,568	53,325	8,290	3,700	1,800		18,334	85,449	658,017
VOCATIONAL NURSING	156,287	20,133	3,525	3,200			5,700	32,558	188,845
TOTAL VOCATIONAL INSTRUCTION	1,419,953	148,396	25,530	50,685	2,600	0	33,934	261,145	1,681,098
INSTRUCTIONAL SUPPORT:									
LIBRARY	246,814	22,149	4,277	57,920	58,600		2,302	145,248	392,062
DISTANCE LEARNING	161,032	14,219	5,502	24,300	1,600		3,000	48,621	209,653
COMPUTER SERVICES	165,615	13,062	2,345	2,900	1,200		2,700	22,207	187,822
TOTAL INSTRUCTIONAL SUPPORT	573,461	49,430	12,124	85,120	61,400	0	8,002	216,076	789,537
OTHER INSTRUCTIONAL:									
WORKFORCE EDUCATION	85,514	8,841	21,392	17,100			8,000	55,333	140,847
EMT PROGRAM	48,407	9,441	2,100	0	1,000		2,400	14,941	63,348
TOTAL OTHER INSTRUCTION	133,921	18,282	23,492	17,100	1,000	0	10,400	70,274	204,195

PANOLA COLLEGE
 CURRENT UNRESTRICTED FUND EXPENDITURES
 EXPENDITURES OBJECT BUDGET
 2006-07

FUNCTION	SALARIES	STAFF BENEFITS	GENERAL EXPENSES	SUPPLIES	EQUIPMENT	SCHOLAR- SHIPS	TRAVEL	TOTAL WITHOUT SALARIES	TOTAL BUDGET 2006-07
CARTHAGE CAMPUS									
INSTITUTIONAL SUPPORT:									
GOVERNING BOARD OF TRUSTEES		38,948	1,800	3,900			3,500	48,148	48,148
PRESIDENT'S OFFICE	181,945	21,747	3,535	4,225			8,000	37,507	219,452
BUSINESS & FISCAL MANAGEMENT	320,728	30,248	13,645	7,150	2,000		6,375	59,418	380,146
COLLEGE RELATIONS/SERVICES	90,333	8,340	86,958	2,700			2,125	100,123	190,456
GRANTS WRITER	43,792	3,903	375	400			3,500	8,178	51,970
GENERAL INSTITUTIONAL	52,426	4,929	253,600	784,755		42,000	0	1,085,284	1,137,710
CAMPUS SECURITY	83,268	7,584	2,085	1,550	2,000		1,400	14,619	97,887
STAFF BENEFITS		43,352					0	43,352	43,352
INSTITUTIONAL RESEARCH	6,300	498	365	700			850	2,413	8,713
INSTITUTIONAL EFFECTIVENESS / SACS			300				6,000	6,300	6,300
TOTAL INSTITUTIONAL SUPPORT	778,792	159,549	362,663	805,380	4,000	42,000	31,750	1,405,342	2,184,134
STUDENT SERVICES:									
STUDENT SERVICE ADMINISTRATION	152,033	13,777	17,910	7,250			9,000	47,937	199,970
ADMISSIONS & REGISTRAR	135,956	12,697	20,675	4,100			2,000	39,472	175,428
STUDENT ACTIVITIES	36,720	3,634	16,950	950			1,500	23,034	59,754
STUDENT SENATE			225	75			3,800	4,100	4,100
FINANCIAL AID	95,497	8,939	3,600	1,200	800		1,500	16,039	111,536
GUIDANCE & COUNSELING	76,115	6,621	550	850			1,500	9,521	85,636
TESTING	56,414	5,131	1,000	21,050			4,000	31,181	87,595
HONORS PROGRAM			105	300			1,887	2,292	2,292
TOTAL STUDENT SERVICES	552,735	50,799	61,015	35,775	800	0	25,187	173,576	726,311

PANOLA COLLEGE
CURRENT UNRESTRICTED FUND EXPENDITURES
EXPENDITURES OBJECT BUDGET
2006-07

FUNCTION	SALARIES	STAFF BENEFITS	GENERAL EXPENSES	SUPPLIES	EQUIPMENT	SCHOLAR- SHIPS	TRAVEL	WITHOUT SALARIES	BUDGET 2006-07
CARTHAGE CAMPUS									
PHYSICAL PLANT									
GENERAL SERVICES	513,051	58,416	9,725	288,335	71,419		2,900	430,795	943,846
UTILITIES			299,550					299,550	299,550
TOTAL PHYSICAL PLANT	513,051	58,416	309,275	288,335	71,419	0	2,900	730,345	1,243,396
TRANSFERS									
TRANSFER TO AUXILIARY			239,696					239,696	239,696
TRANSFER TO UNEXPENDED PLANT - LIBRARY			363,345					363,345	363,345
TRANSFER TO GENERAL SCHOLARSHIPS			306,008					306,008	306,008
TOTAL TRANSFERS	0	0	909,049	0	0	0	0	909,049	909,049
TOTAL CARTHAGE CAMPUS	5,845,538	675,392	1,753,154	1,366,914	160,069	116,485	157,176	4,229,190	10,074,728
MARSHALL CENTER									
MARSHALL MALL CENTER	87,667	8,210	6,700	6,150	1,600		6,668	29,328	116,995
WORKFORCE EDUCATION	4,800	680	1,500	200			0	2,380	7,180
MARSHALL CENTER	92,467	8,890	8,200	6,350	1,600	0	6,668	31,708	124,175
SHELBY CENTER									
SHELBY COLLEGE CENTER	227,128	19,907	54,334	8,150	2,000		18,674	103,065	330,193
COSMETOLOGY	60,225	6,926	950	7,175			900	15,951	76,176
VOCATIONAL NURSING	192,181	18,538	3,525	3,200			7,700	32,963	225,144
ENVIRONMENTAL TECHNOLOGY	1,575	125	900	500	1,000		1,150	3,675	5,250
INDUSTRIAL TECHNOLOGY	61,277	4,908	2,800	15,180			4,700	27,588	88,865
WORKFORCE EDUCATION	5,000	557	8,100	300			0	8,957	13,957
OIL & GAS TECHNOLOGY	6,000	481	1,350	5,000	1,000		3,600	11,431	17,431
SHELBY COLLEGE CENTER	553,386	51,442	71,959	39,505	4,000	0	36,724	203,630	757,016
GRAND TOTAL ALL LOCATIONS	\$6,491,391	\$735,724	\$1,833,313	\$1,412,769	\$165,669	\$116,485	\$200,568	\$4,464,528	\$10,955,919

PANOLA COLLEGE
 AUXILIARY FUNDS
 2006-07 BUDGET & 2005-06 BUDGET COMPARISON

REVENUE SOURCE	2006-07 BUDGET	2005-06 BUDGET
COLLEGE STORE SALES	\$835,000	\$837,000
FOOD SERVICE	343,000	306,000
HOUSING	355,000	354,000
INTEREST INCOME	4,000	3,000
MISCELLANEOUS	14,000	14,000
TRANSFERS IN FROM UNRESTRICTED	239,696	249,973
TOTAL REVENUE	\$1,790,696	\$1,763,973
EXPENDITURES		
COLLEGE STORE	\$783,088	\$775,658
FOOD SERVICE	376,000	369,980
ATHLETICS	607,465	590,665
HOUSING	24,143	27,670
TOTAL EXPENDITURES	\$1,790,696	\$1,763,973

PANOLA COLLEGE
 AUXILIARY FUND
 EXPENDITURES OBJECT BUDGET
 2006-07

FUNCTION	SALARIES	STAFF BENEFITS	GENERAL EXPENSES	SUPPLIES	EQUIPMENT	SCHOLAR- SHIPS	TRAVEL	TOTAL WITHOUT SALARIES	TOTAL BUDGET 2006-07
ATHLETICS									
MEN'S BASKETBALL	\$28,282	\$5,118	\$16,816	\$17,485	\$0	\$44,640	\$5,400	\$89,459	\$117,741
MEN'S BASEBALL	30,221	5,457	25,434	22,250	0	66,960	6,400	126,501	156,722
WOMEN'S BASKETBALL	32,811	5,753	19,136	16,700	0	44,640	5,400	91,629	124,440
ATHLETIC DIRECTOR	21,102	2,394	17,934	200	0	0	150	20,678	41,780
RODEO TEAM	15,000	1,201	12,780	13,600	0	21,360	1,500	50,441	65,441
VOLLEYBALL	27,360	3,230	13,976	13,015	0	39,060	4,700	73,981	101,341
TOTAL ATHLETICS	154,776	23,153	106,076	83,250	0	216,660	23,550	452,689	607,465
COLLEGE STORE	29,410	9,793	8,245	735,340	0	0	300	753,678	783,088
FOOD SERVICE	0	0	0	376,000	0	0	0	376,000	376,000
FORESTRY DORM	2,898	666	331	2,600	1,000	0	0	4,597	7,495
MEN'S DORM	0	0	2,650	2,200	0	0	0	4,850	4,850
WOMEN'S DORM	1,875	570	3,453	3,900	2,000	0	0	9,923	11,798
TOTAL AUXILIARY FUNDS	\$188,959	\$34,182	\$120,755	\$1,203,290	\$3,000	\$216,660	\$23,850	\$1,601,737	\$1,790,696

PANOLA COLLEGE
 CURRENT RESTRICTED FUND REVENUES
 2006-07 BUDGET

	TOTAL 2006-07
LOCAL SOURCES	
TRANSFERS IN FROM UNRESTRICTED FUND	\$306,008
INTEREST/ROYALTY INCOME	32,000
TOTAL LOCAL SOURCES	338,008
STATE SOURCES:	
CARL PERKINS GRANT	192,976
ADULT BASIC EDUCATION GRANTS	28,469
NURSING INNOVATION GRANT	68,500
TOTAL STATE SOURCES	221,445
FEDERAL SOURCES:	
PELL AWARDS	1,700,000
SEOG AWARDS	105,518
CWS AWARDS	95,940
HRSA NURSING SCHOLARSHIPS	24,000
SELF SUFFICIENCY FUND GRANT	140,000
ADULT BASIC EDUCATION GRANTS	134,550
TOTAL FEDERAL SOURCES	2,200,008
TOTAL CURRENT RESTRICTED FUND REVENUES	\$2,759,461

PANOLA COLLEGE
 CURRENT RESTRICTED FUND EXPENDITURES
 2006-07 BUDGET

	TOTAL 2006-07
LOCAL SOURCES	
TUITION & FEE SCHOLARSHIPS	\$338,008
TOTAL LOCAL SOURCES	338,008
 STATE SOURCES:	
CARL PERKINS GRANT	192,976
ADULT BASIC EDUCATION GRANTS	28,469
TANF LITERACY GRANT	68,500
TOTAL STATE SOURCES	221,445
 FEDERAL SOURCES:	
PELL AWARDS	1,700,000
SEOG AWARDS	105,518
CWS AWARDS	95,940
HRSA NURSING SCHOLARSHIPS	24,000
SELF SUFFICIENCY FUND GRANT	140,000
ADULT BASIC EDUCATION GRANTS	134,550
TOTAL FEDERAL SOURCES	2,200,008
TOTAL CURRENT RESTRICTED FUND EXPENDITURES	\$2,759,461

PANOLA COLLEGE
UNEXPENDED PLANT FUND
2006-07 BUDGET

TOTAL
2006-07

REVENUES

RESERVE FOR LIBRARY	\$363,345
INTEREST EARNINGS	60,000
TOTAL RESOURCES	<u>\$423,345</u>

EXPENDITURES

TOTAL EXPENDITURES	<u>\$0</u>
--------------------	------------

OTHER USES

TRANSFER LOAN PAYMENT ON CONSTRUCTION (PRINCIPAL AND INTEREST)	
TRANSFER TO CONSTRUCTION FUND PLANT REPAIRS	675,000
TRANSFERS TO CURRENT UNRESTRICTED FUND	(137,630)
TOTAL OTHER USES	<u>\$537,370</u>
TOTAL EXPENDITURES AND OTHER USES	<u>\$537,370</u>
ACCUMULATION (USE) OF CASH RESERVES	<u>(\$114,025)</u>

PANOLA COLLEGE
CONSTRUCTION FUND
2006-07 BUDGET

TOTAL
2006-07

REVENUES

TRANSFERS FROM UNEXPENDED PLANT FUND

\$675,000

TOTAL REVENUES

\$675,000

EXPENDITURES

PLANT MAINTENANCE

\$675,000

TOTAL EXPENDITURES

\$675,000